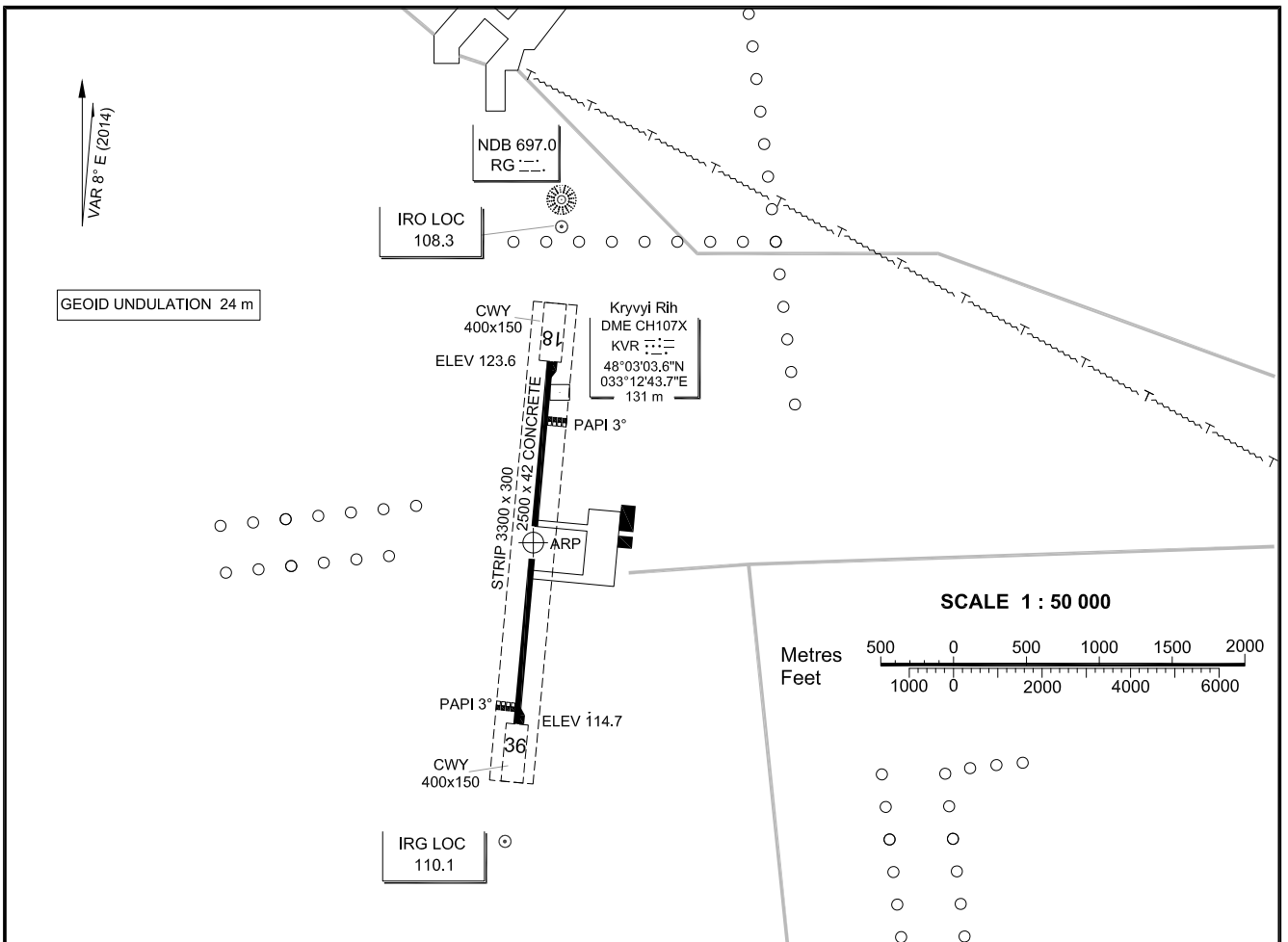
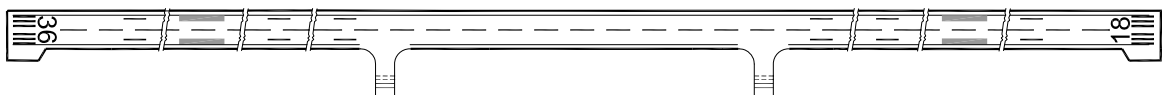


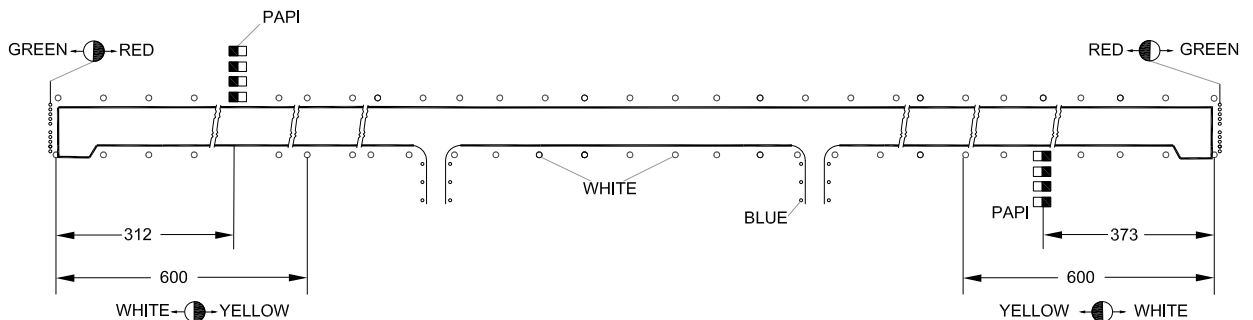
AERODROME CHART-ICAO ARP: 48°02'39"N 033°12'29"E ELEV 124 m TWR 120.300 KRYVYI RIH/Lozuvatka



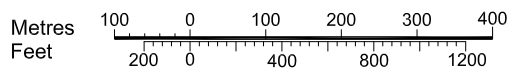
MARKING AIDS RWY 36/18 AND EXIT TWY



LIGHTING AIDS RWY 36/18 AND EXIT TWY



SCALE 1 : 10 000



CHANGE: RG NDB, Geoid undulation; THR DIRECTION.

RWY	DIRECTION	THR	BEARING STRENGTH	AERODROME LIGHTING
18	177°	48°03'19.29"N 033°12'34.66"E	PCN 32/R/B/W/U	Approach: RWY 36/18 - NIL Runway: Edge-WHITE, last 600 m - YELLOW, LIH
36	357°	48°01'58.68"N 033°12'23.44"E		Threshold: GREEN

ELEVATIONS AND DIMENSIONS IN METRES BEARINGS ARE MAGNETIC