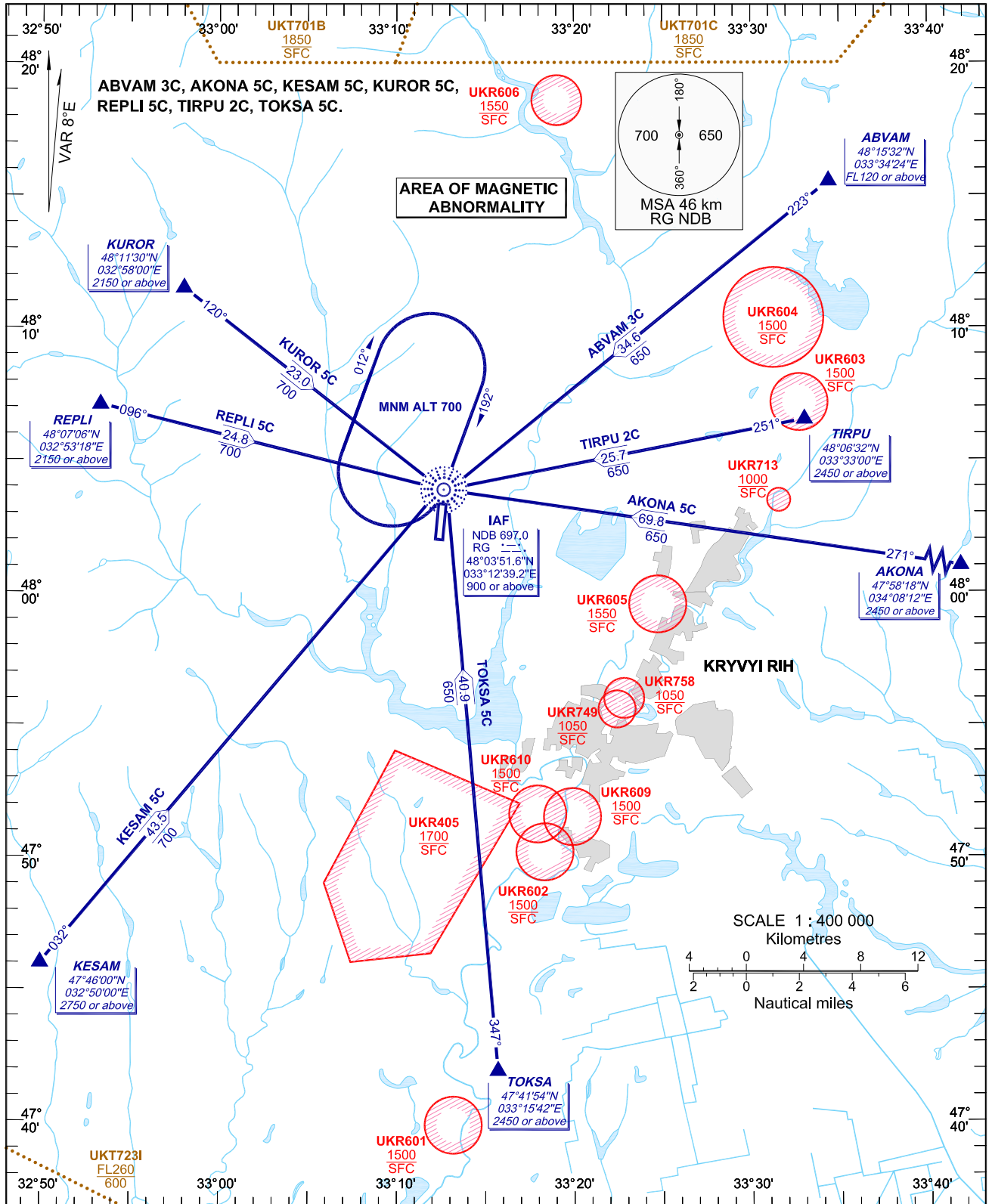


STANDARD ARRIVAL CHART
INSTRUMENT (STAR)-ICAO

TRANSITION LEVEL: by ATC
TRANSITION ALT: 3050

TWR 120.300

KRYVVI RIH/Lozuvatka
RWY 18/36



NOTE:

CHANGE: New procedures.

BEARINGS AND TRACKS ARE MAGNETIC
ALTITUDES, HEIGHTS AND ELEVATIONS ARE IN METRES
DISTANCES ARE IN KILOMETRES

STAR RWY 18/36

Designator	Route	Altitude	Remarks
ABVAM 3C ABVAM THREE CHARLIE	On track 223° to IAF RG NDB, then according to approach chart	Cross ABVAM at FL120 or above, IAF RG NDB at 900 or above	nil
AKONA 5C AKONA FIVE CHARLIE	On track 271° to IAF RG NDB, then according to approach chart	Cross AKONA at 2450 or above, IAF RG NDB at 900 or above	nil
KESAM 5C KESAM FIVE CHARLIE	On track 032° to IAF RG NDB, then according to approach chart	Cross KESAM at 2750 or above, IAF RG NDB at 900 or above	nil
KUROR 5C KUROR FIVE CHARLIE	On track 120° to IAF RG NDB, then according to approach chart	Cross KUROR at 2150 or above, IAF RG NDB at 900 or above	nil
REPLI 5C REPLI FIVE CHARLIE	On track 096° to IAF RG NDB, then according to approach chart	Cross REPLI at 2150 or above, IAF RG NDB at 900 or above	nil
TIRPU 2C TIRPU TWO CHARLIE	On track 251° to IAF RG NDB, then according to approach chart	Cross TIRPU at 2450 or above, IAF RG NDB at 900 or above	nil
TOKSA 5C TOKSA FIVE CHARLIE	On track 347° to IAF RG NDB, then according to approach chart	Cross TOKSA at 2450 or above, IAF RG NDB at 900 or above	nil